

KMC 1200S-6

KTEG



Engine

Engine model:
Isuzu AQ-6WG1XASA-01
Net Power – ISO14396:
382 kW (512 hp)

Weight

Operating weight including
demolition front:
approximately 170.000 kg

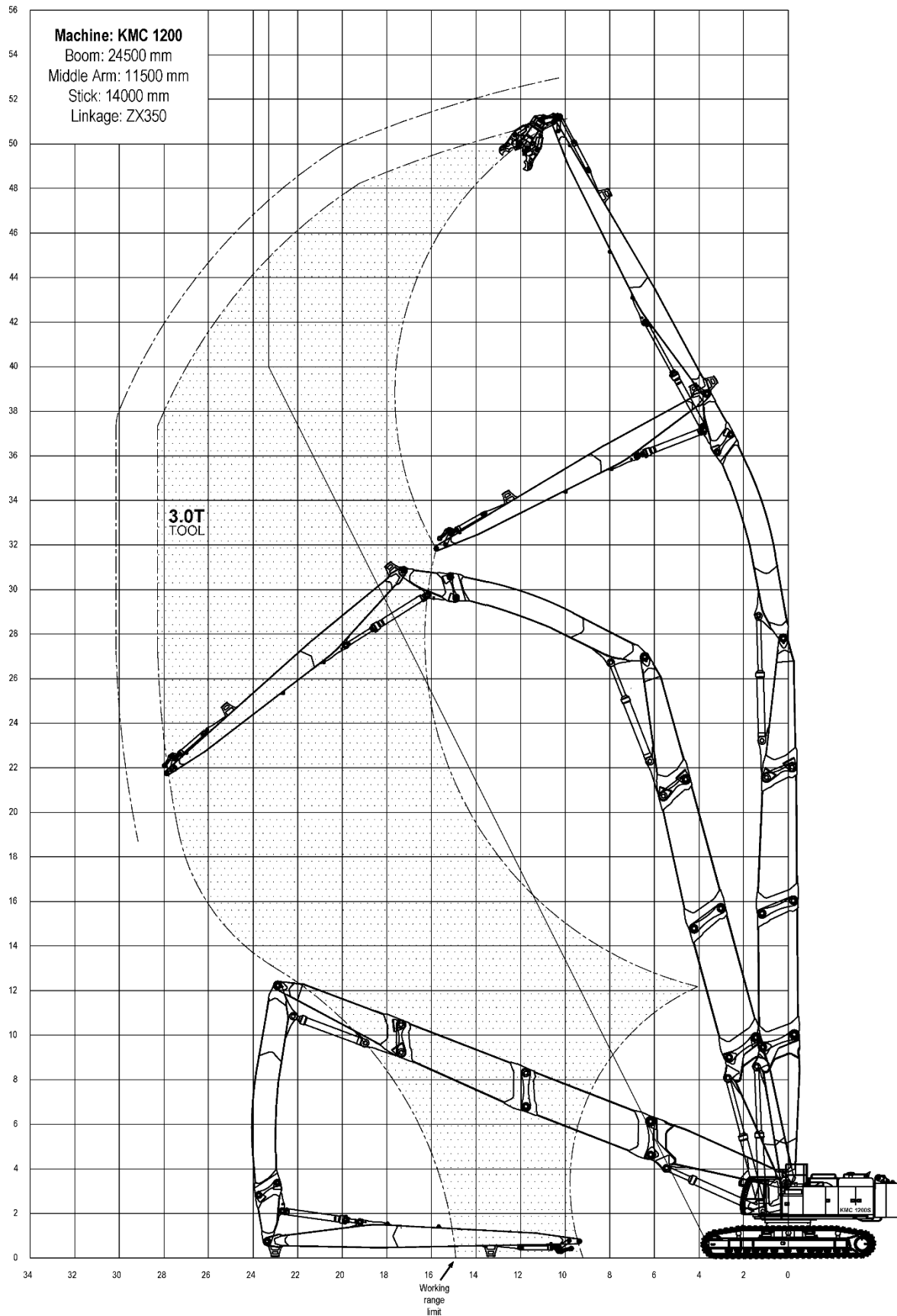
Working height

Maximum pin height:
51 meter
Maximum safe working height:
47 meters

Demolition front

KTEG

Pin height 51 meters

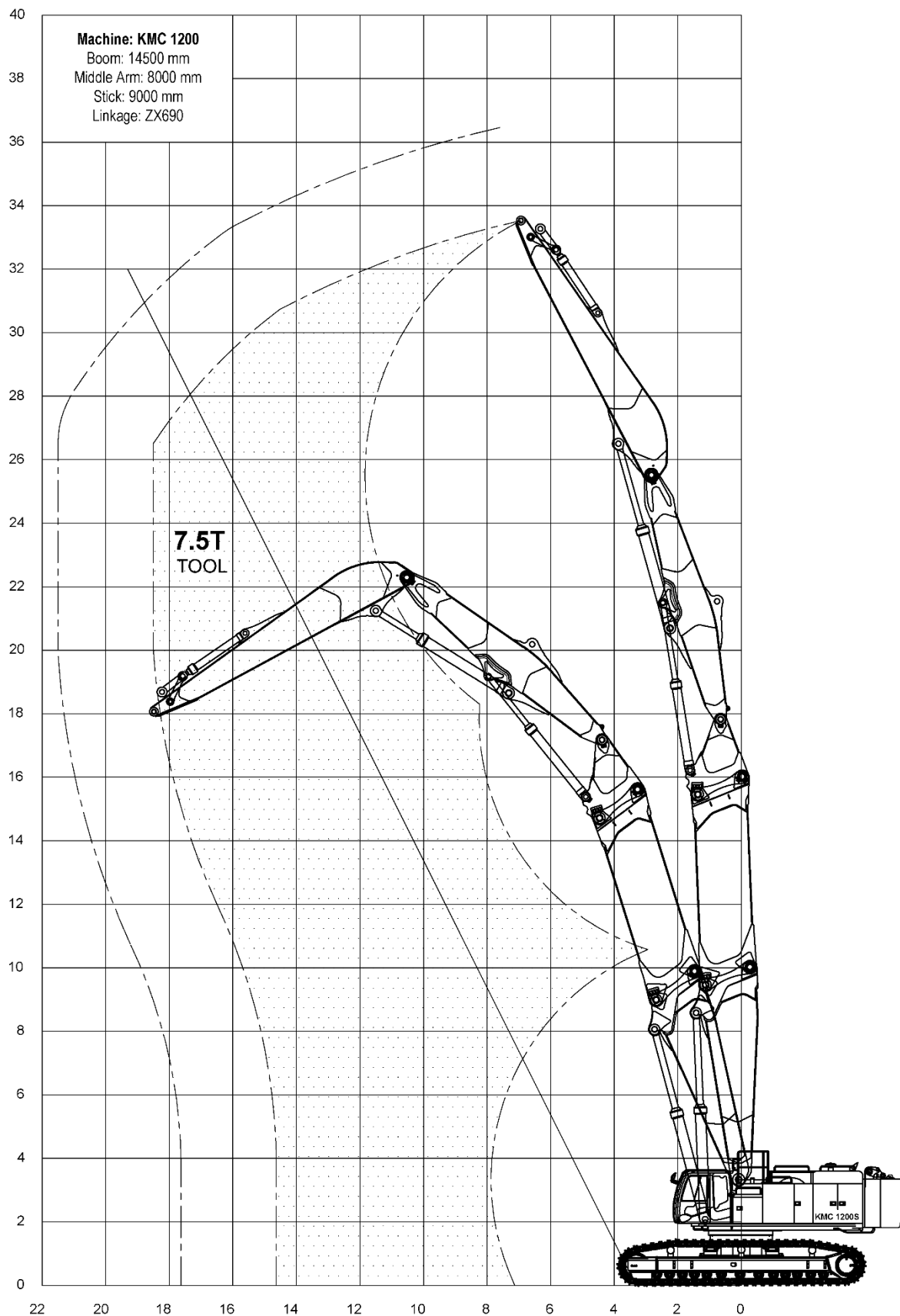


Specifications are subject to change without notice.

KMC1200S_V190327

Triple 9.0m Stick + Ext.

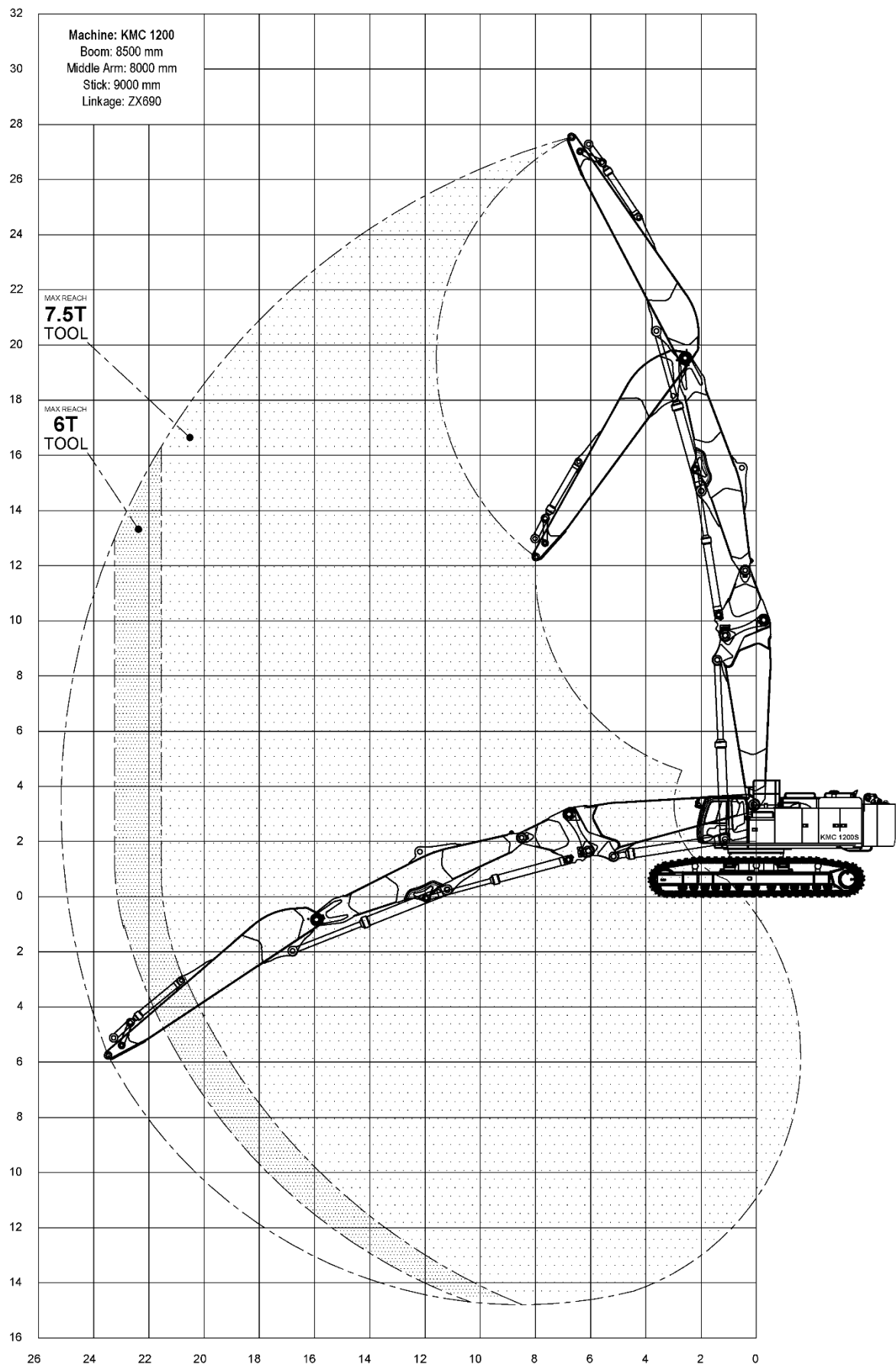
KTEG



Specifications are subject to change without notice.

Triple 9.0m Stick

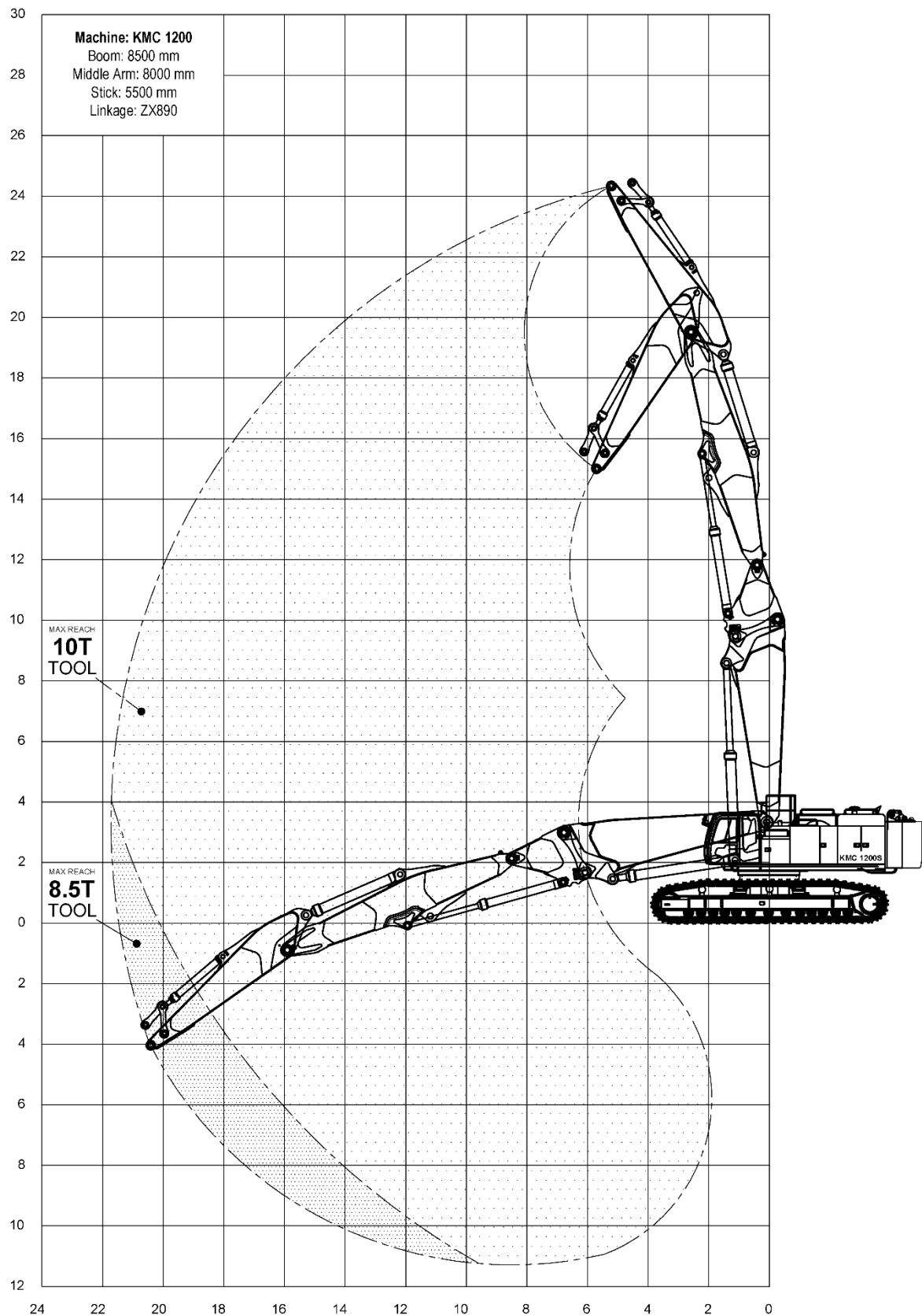
KTEG



Specifications are subject to change without notice.

Triple 5.5m Stick

KTEG

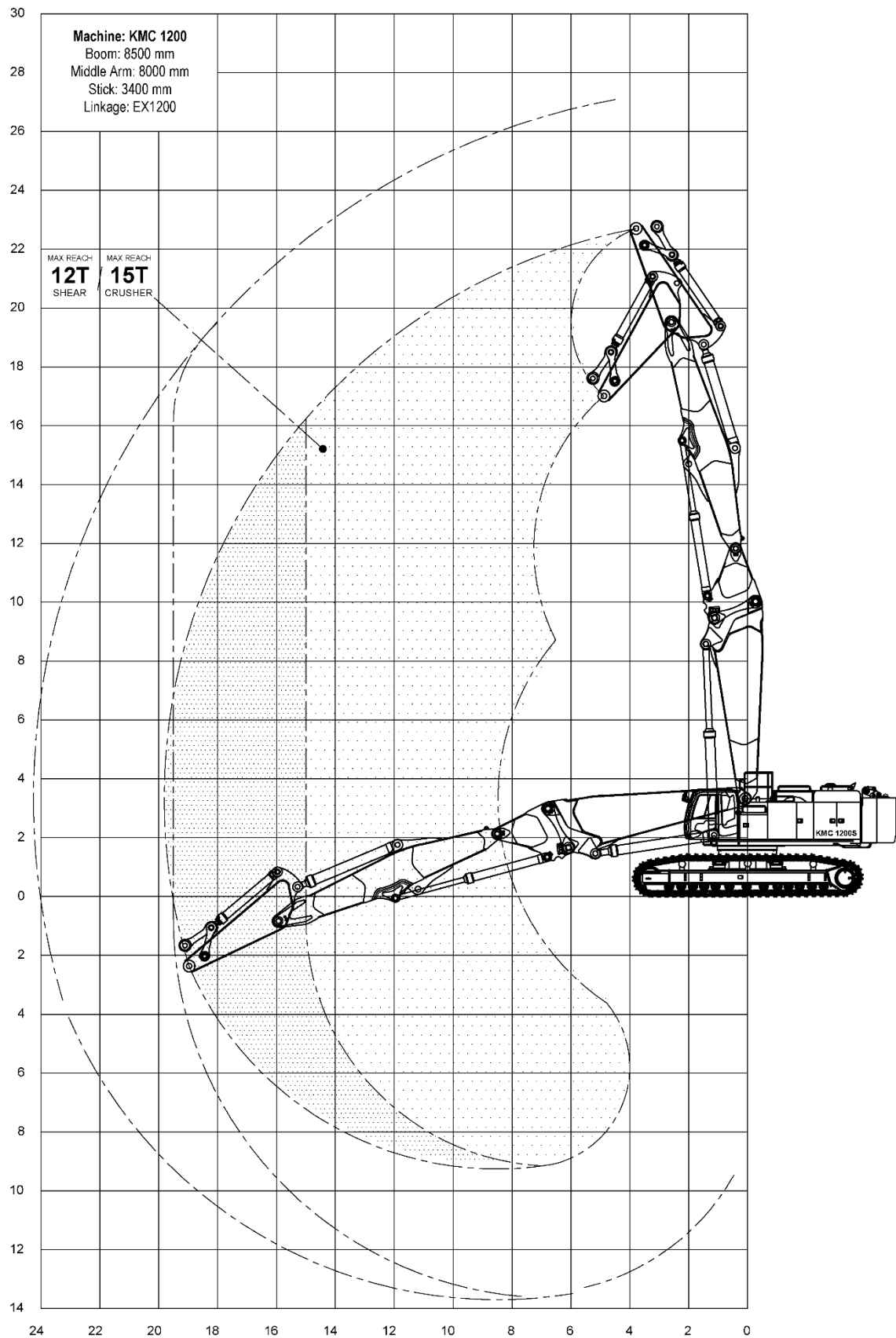


Specifications are subject to change without notice.

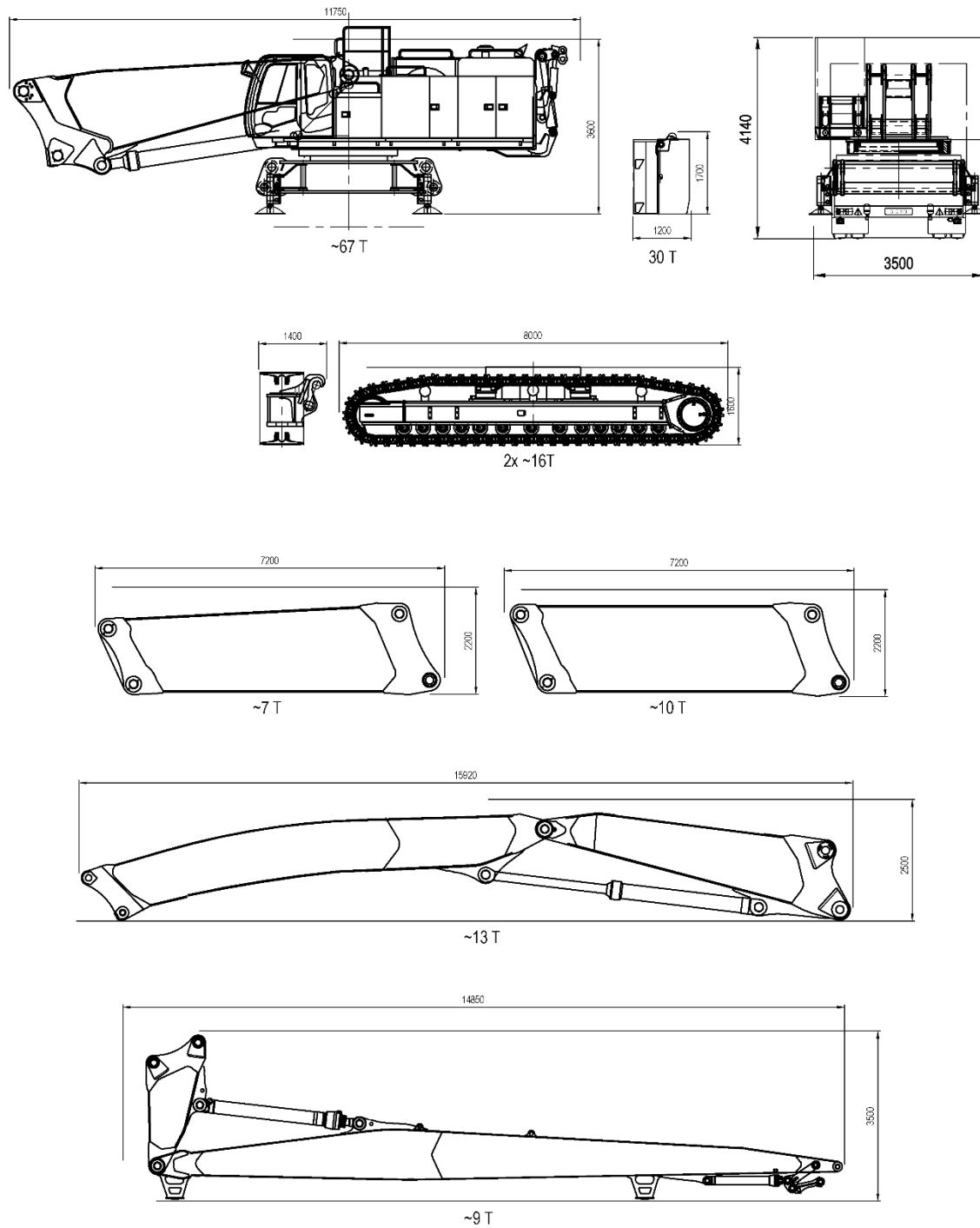
KMC1200S_V190327

Triple 3.4m Stick

KTEG

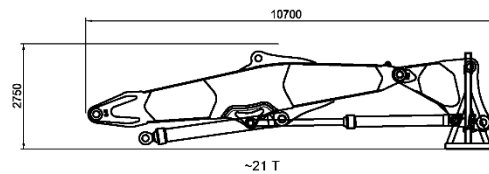
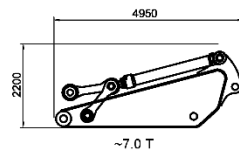
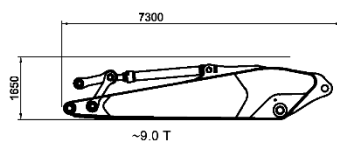
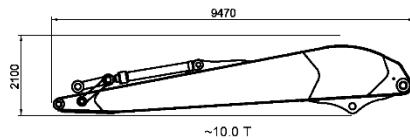
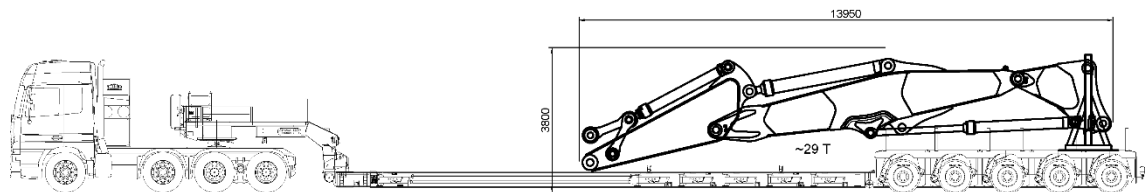
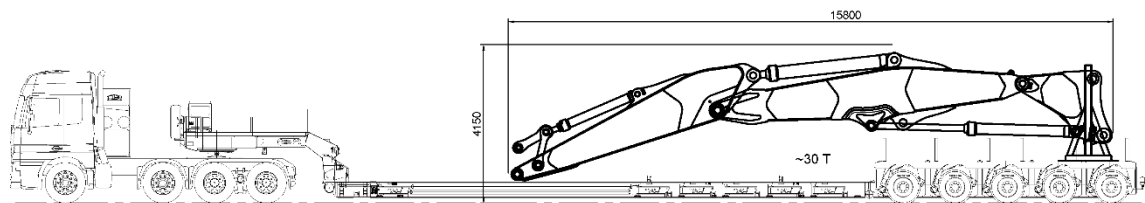
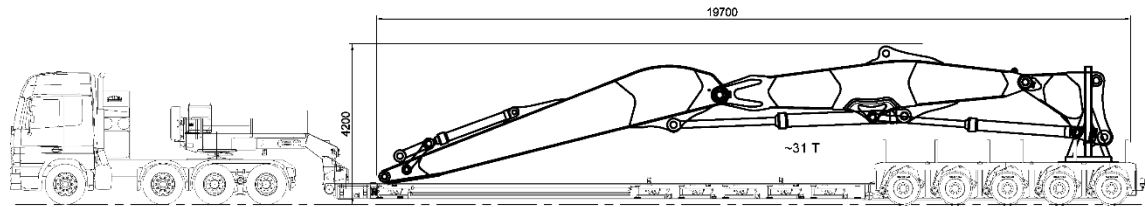


Specifications are subject to change without notice.



Lengths and weights are preliminary

Specifications are subject to change without notice.



Lengths and weights are preliminary

Specifications are subject to change without notice.

KTEG GmbH
Baindter Strasse 29
88255 Baienfurt / Germany

Tel.: +49 751 5004-0

KMC1200S_V190327