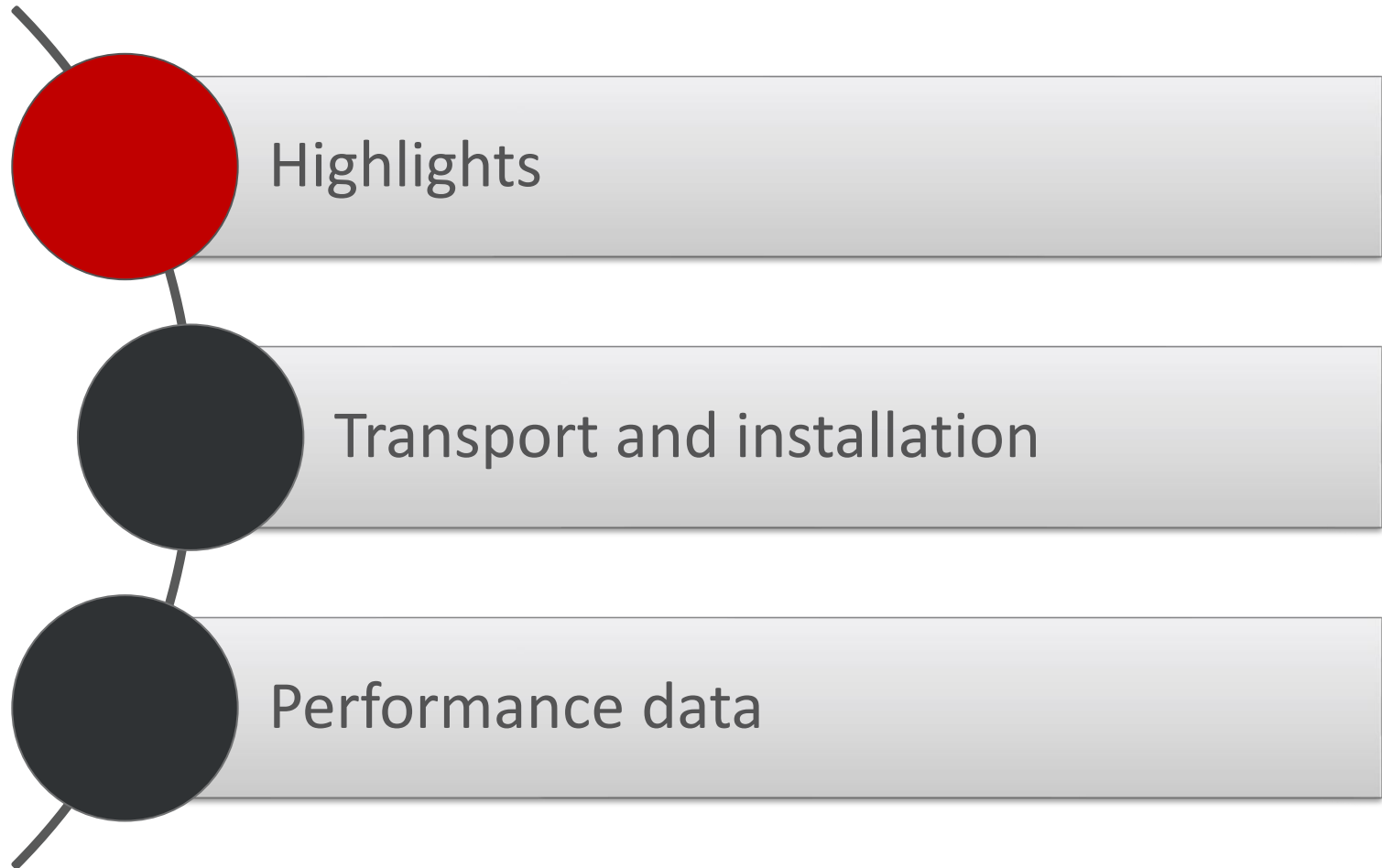


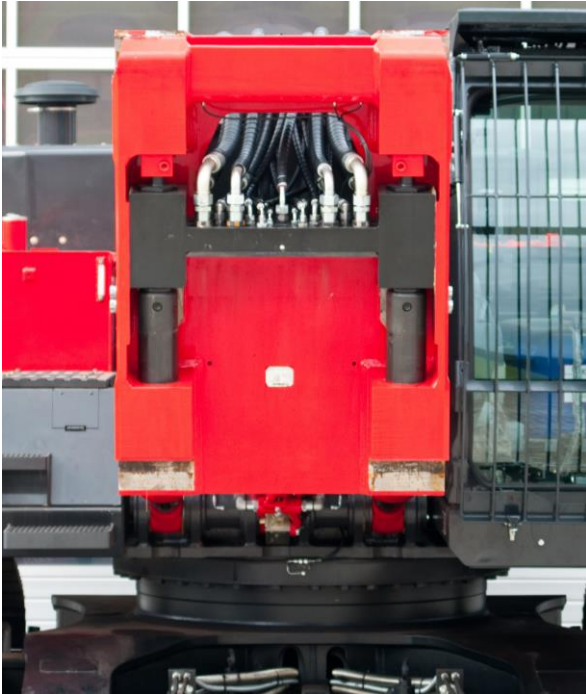
KTEG

HITACHI Systempartner.



KMC1000P Highlights

Boom Quick Connect system



- › KTEG Performance Quick Connect system
 - › Fully hydraulic boom change
 - › No need to leave the cabin
- › Multi-Carrier Concept
 - › Boom change **within a few minutes**
 - › Flexibility to be up to any task
 - › Productivity on every height level
 - › Interchangeability with new fronts

Example Interchangeability

- › After 10.000 operating hours, there is the wish for a new machine
- › The two fronts, which have only 5.000 hours each can be kept
- › Only new base machine is necessary
- › **Lower cost of ownership over a long time period**

Example flexibility

- › Demolition with High-Reach front for 1 hour
- › Sorting of material in the afternoon for 1 hour
- › **No time loose due to boom change**

KMC1000P Highlights

Undercarriage



- › High stability
- › Hydraulic extendable undercarriage to reduce transport width
- › Machine can be made transport-ready within short time

KMC1000P Highlights

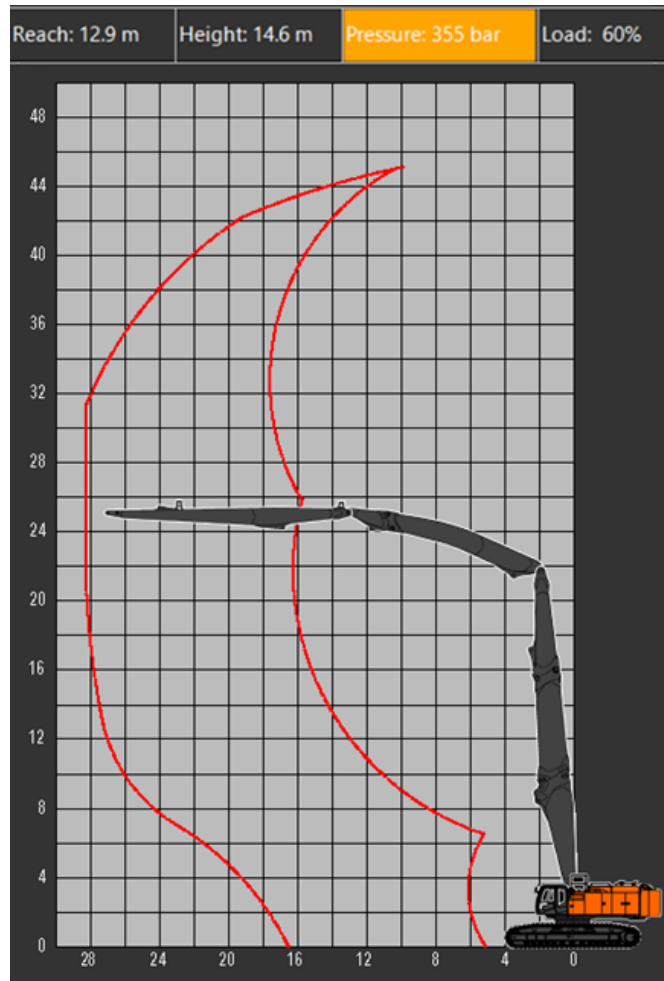
Counterweight



- › 22,5 t counterweight for heavy front attachments
- › Removable hydraulically for transport
- › Water tank on top for autonomous dust suppression

KMC1000P Highlights

LMI



- › Display inside the cabin to show the current boom position
- › Warning, if the machine is operated out of allowed range
- › Avoiding misuse of the machine

KMC1000P Highlights

Transport and installation concept

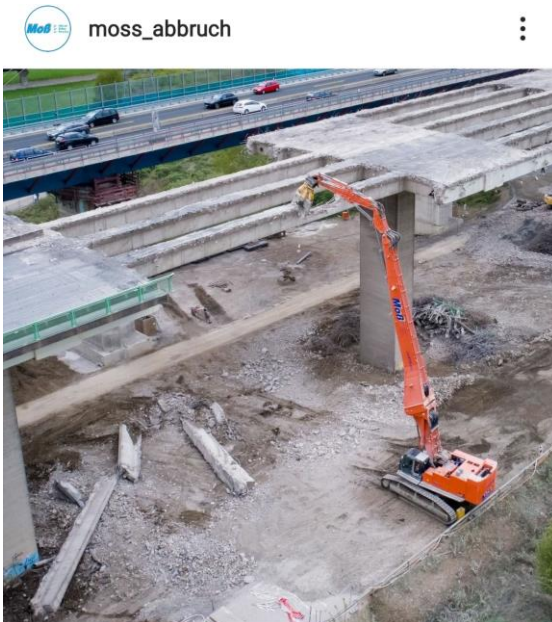
- › Autonomous installation
- › No crane necessary



<https://www.youtube.com/watch?v=A-IJk0Gne5I&feature=youtu.be>

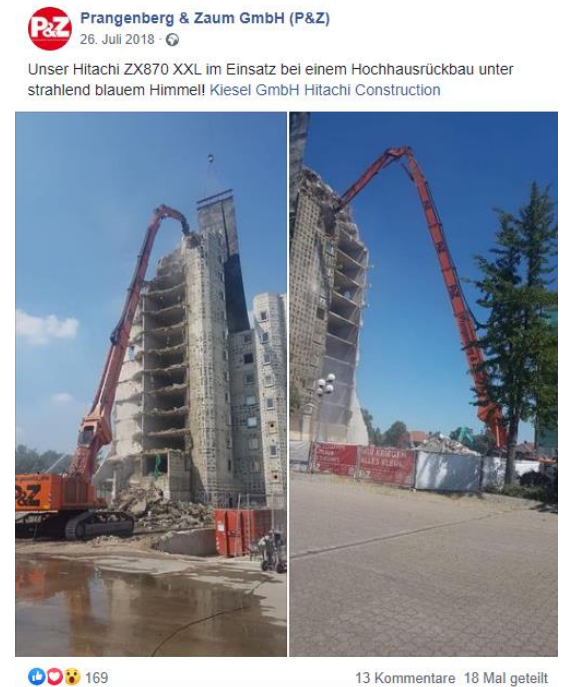
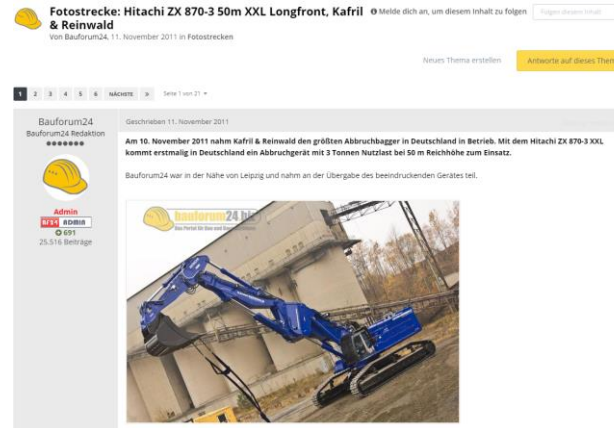
KMC1000P Highlights

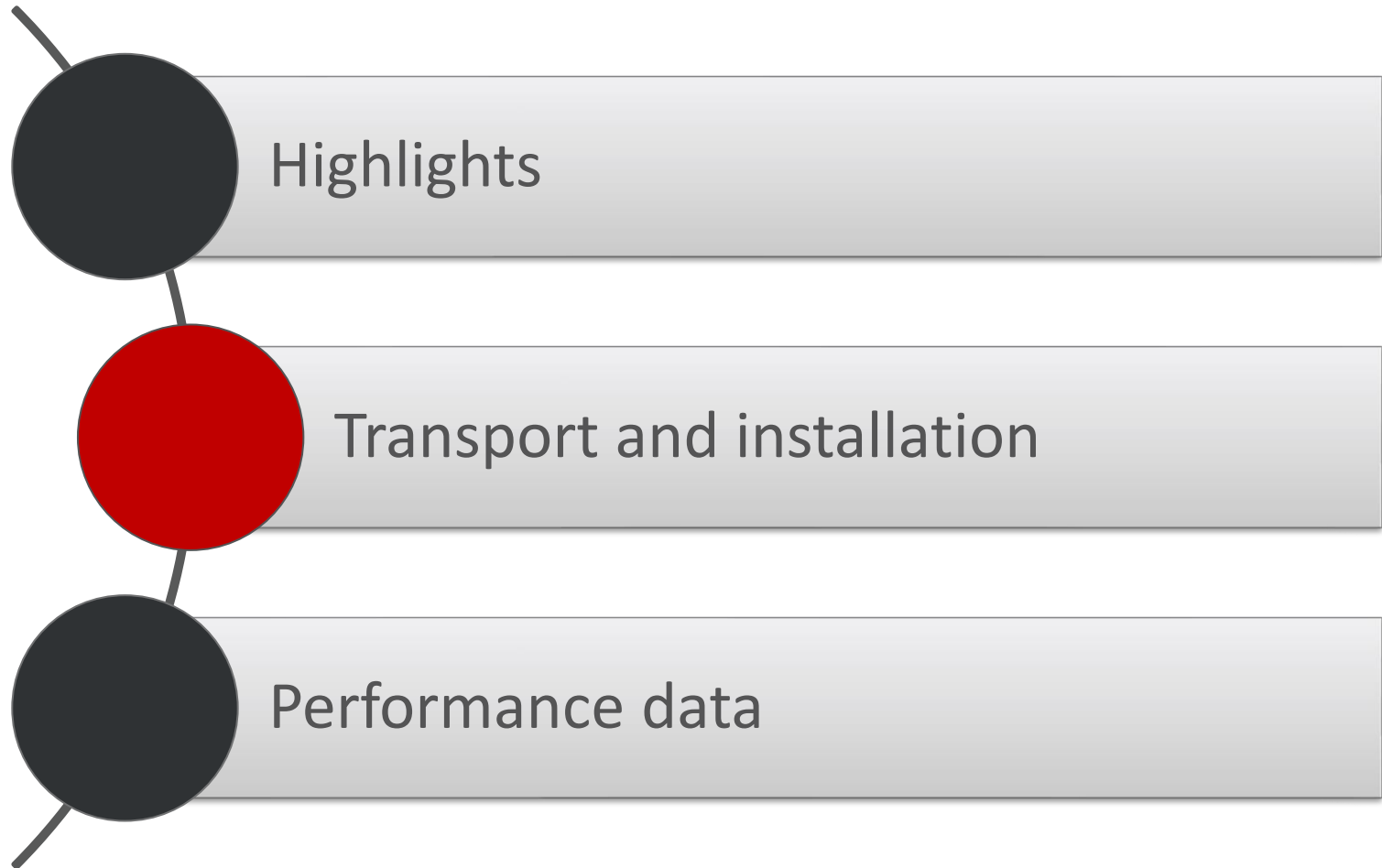
Flagship effect



Liked by **kieselkarriere** and **184 others**
moss_abbruch moss_abbruch #Moss #zx870
#abbruch #lingen #hitachi #lennetalbrücke
#zx870xxl #moss_abbruch #moß

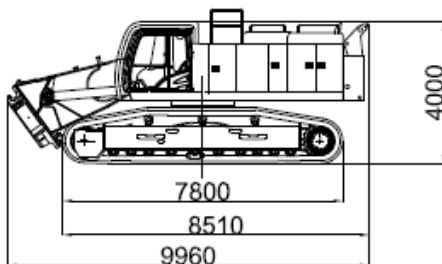
- › High grade of interest on social media as Facebook, Instagram, Youtube,...
- › Huge advertising effect



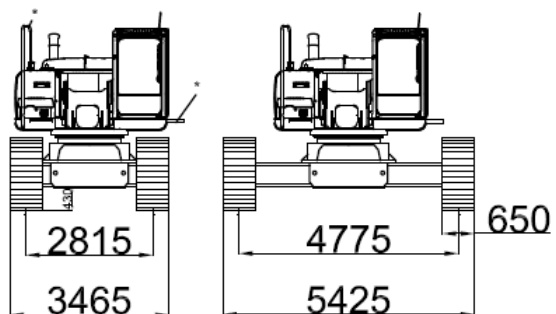


KMC1000P

Transport base machine



Transport weight 90 t



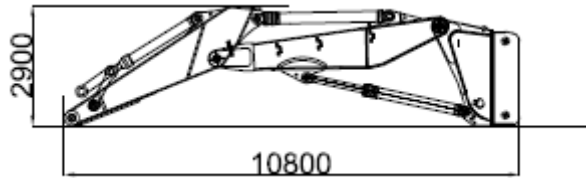
Counterweight incl. water tank 22,5 t



- › Removable counterweight for reducing the transport dimensions and –weight
- › Hydraulic extendable undercarriage allows a transport width >3,5 m
- › Optimized for quick installation on the jobsite in less than ½ day
- › 2 transport units for the base machine in total

KMC1000P

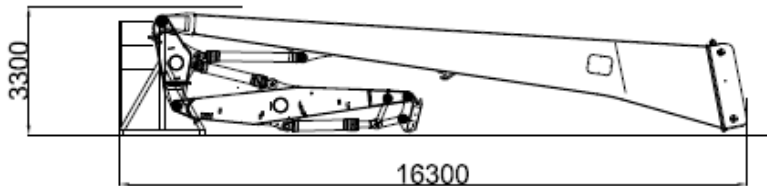
Transport base machine



MUVA

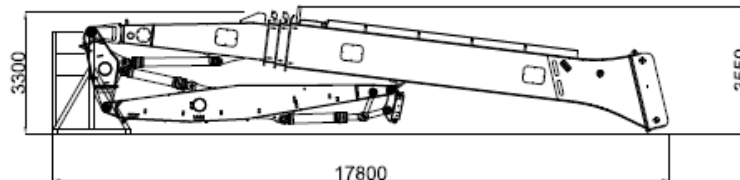
weight 17,7 t

- › All fronts are transported in one piece
- › Quick installation on the jobsite



HR30

weight 20,1 t



THR50

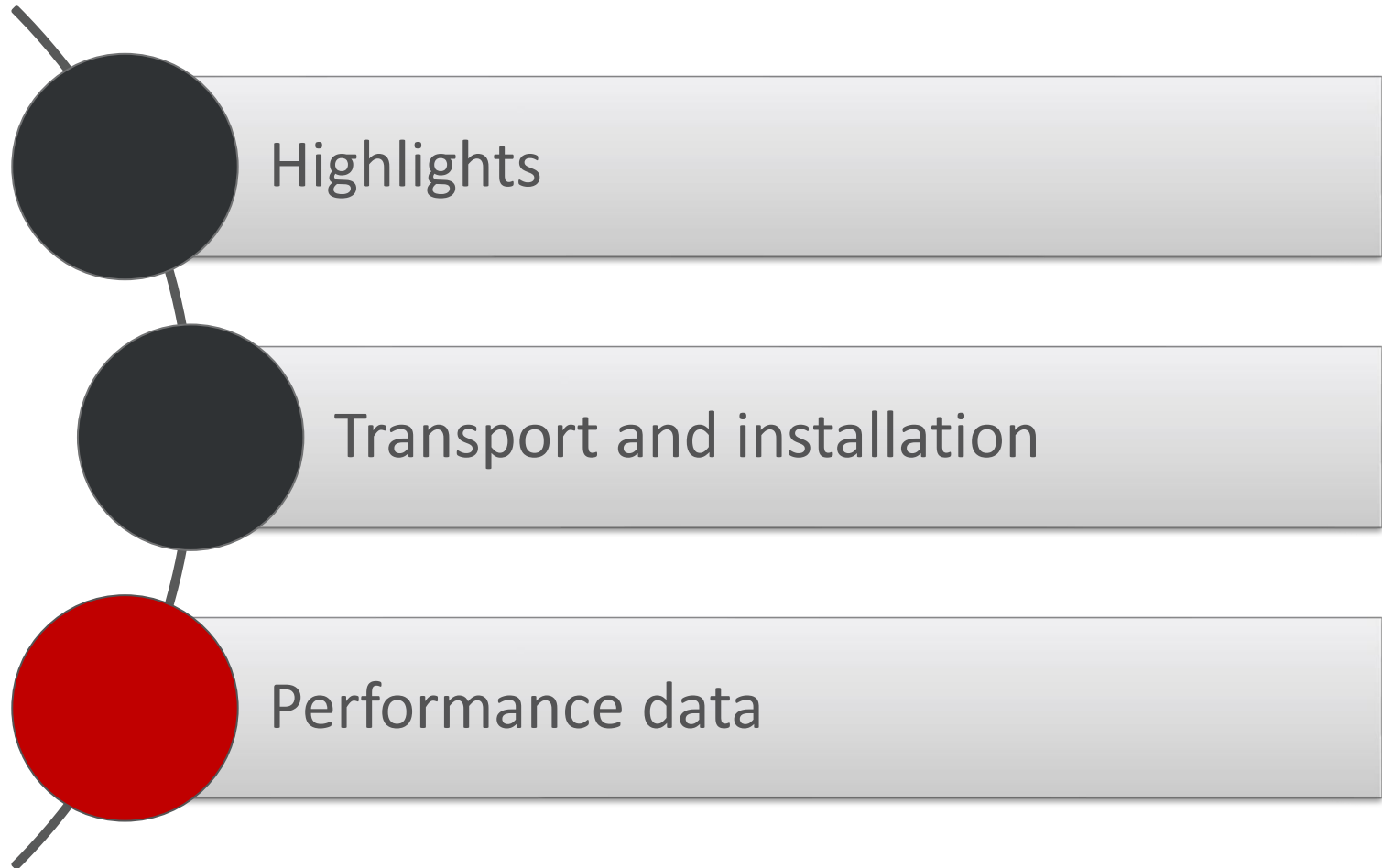
weight 34 t

KMC1000P

Installation KMC1000P Video



<https://www.youtube.com/watch?v=A-IJk0Gne5I&feature=youtu.be>



KMC1000P

Front end attachments overview

KMC1000P		
Front end attachment	Pin height [m]	max. attachable tool weight incl. quick coupler [t]
THR50 extracted	50	3
THR50 retracted	34	4
HR30	30	6
Multi Use (MUVA)	18	10
Shear	15	15



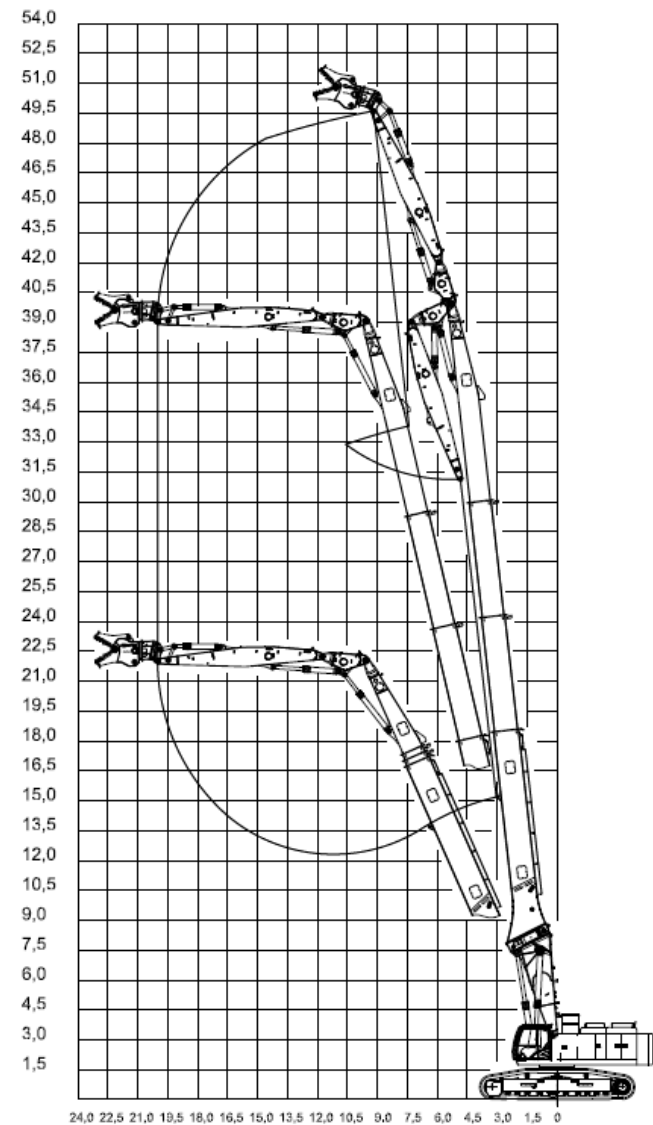
High grade of flexibility

Strong performance on every height level

KMC1000P

Tele High Reach 50

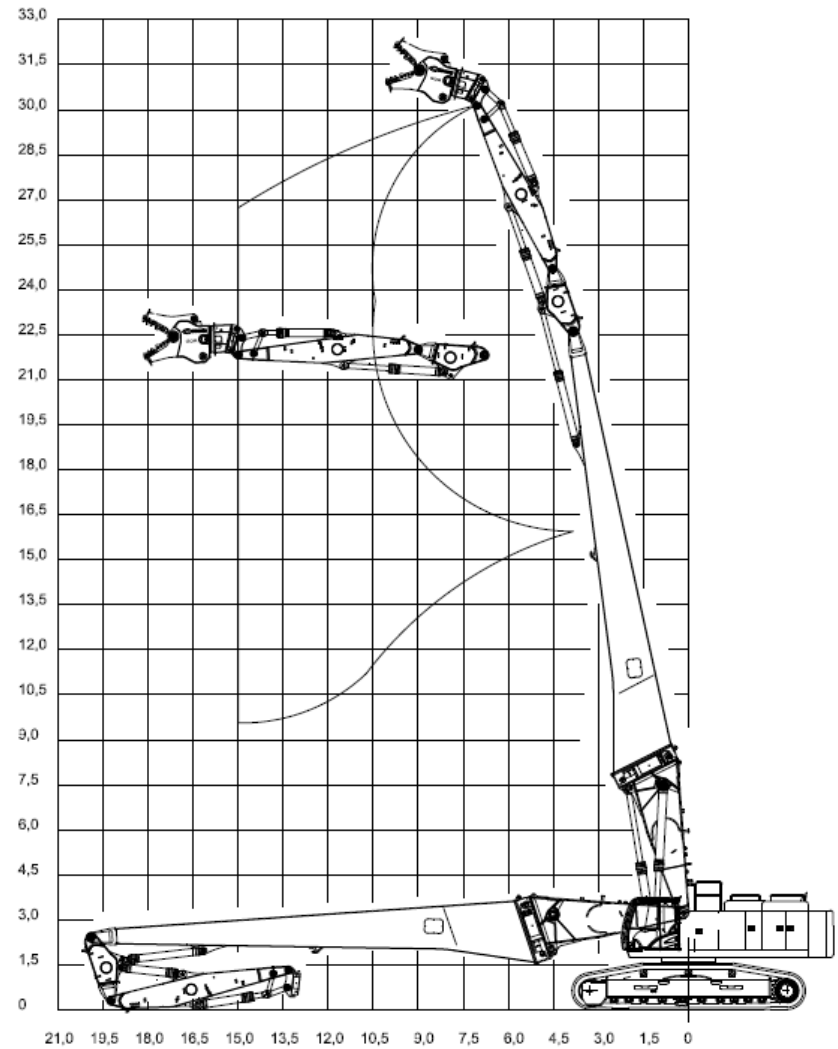
- Pin-Height 50 m
- Tool weight incl. Quick coupler 3 t
- Tool weight incl. Quick Coupler of 4t in retracted position



KMC1000P

High Reach 30

- Pin-Height 30 m
- Tool weight incl. Quick Coupler 6 t

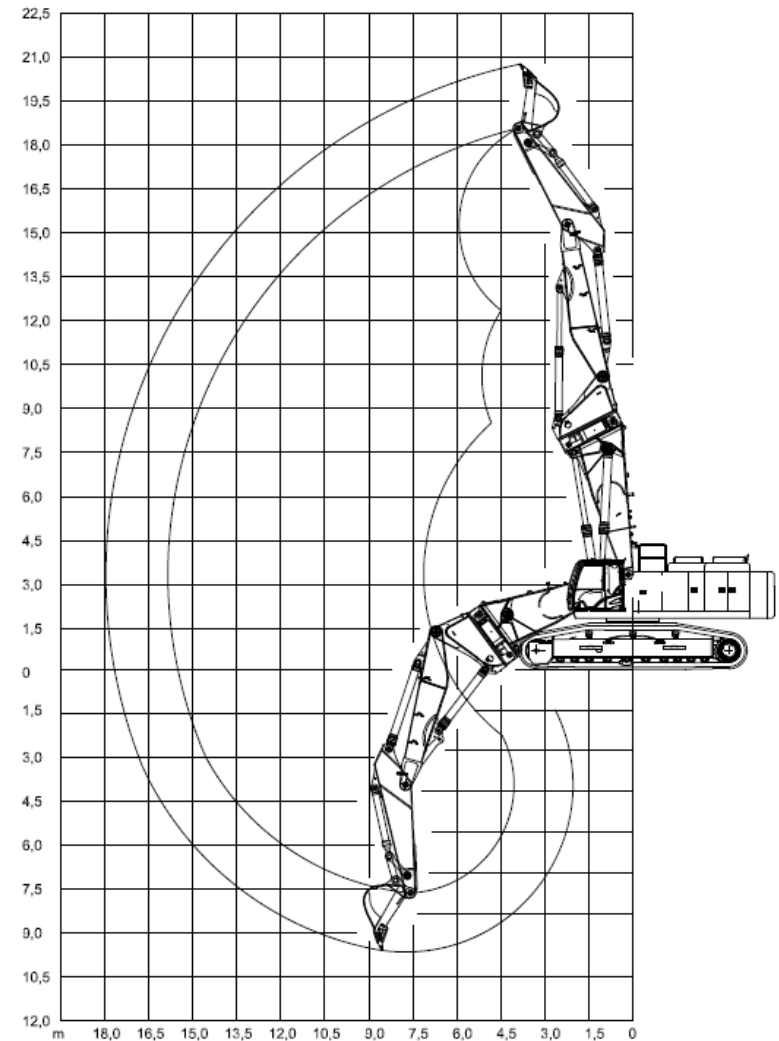


KMC1000P

MUVA

- Pin-Height 18 m
- Tool weight 10 t
- Working below the surface possible

31 t



- › 30 m demolition front
- › <https://www.youtube.com/watch?v=VMSFAZUsPW4&feature=youtu.be>
- › 50 m tele front
- › <https://www.youtube.com/watch?v=m67wNEx6JgQ&feature=youtu.be>
- › <https://www.youtube.com/watch?v=vePM4Sdv8Xk>
- › <https://www.youtube.com/watch?v=wJykCFv9qAU&feature=youtu.be>
- › MUVA
- › https://www.youtube.com/watch?v=J9SpHsM_mE0&feature=youtu.be
- › <https://www.youtube.com/watch?v=ZGasoopckKg&feature=youtu.be>

Vielen Dank!